

Our mission:

Your perfect
atmosphere

Information for end users: top efficiency and comfort range



Ururu Sarara, p. 8





Get ready

The evolution of pure comfort

Discover the next generation of comfort

Only the best is good enough when it comes to your home. Now, Daikin has taken comfort to a whole new level by reimagining a pure atmosphere with its Bluevolution range. When you choose Daikin technologies, you can count on year-round comfort, energy efficiency, reliability and control.

High seasonal efficiency ensures you stay comfortable in winter and summer, without

breaking the bank. The R-32 refrigerant is more environmentally friendly than previous refrigerants. Daikin's many years of experience and broad range of products means you can count on selecting a reliable, long lasting product perfectly suited for your home. And even when you aren't home, you can adjust room temperature and operating mode with a user-friendly smartphone app. Let Daikin help you create the perfect atmosphere.



Breathe deeply Pure atmosphere

A wealth of choice

Daikin's solutions are attractive, quiet and energy efficient. Whether for one room or many, Daikin has the right unit for you.

Why choose Daikin?

The Daikin series with R-32 refrigerant offers you the best in energy efficiency, design and style. Whether you want to heat or cool one or multiple rooms, with wall mounted or concealed ceiling units, Daikin has a model for you.



Pure comfort:
Ururu Sarara

Total climate control with (de-)humidification, air purification and ventilation and the highest heating and cooling efficiency.



Iconic comfort:
Daikin Emura

Top efficiency and comfort in a superior design.



Smart comfort: FTXM-M

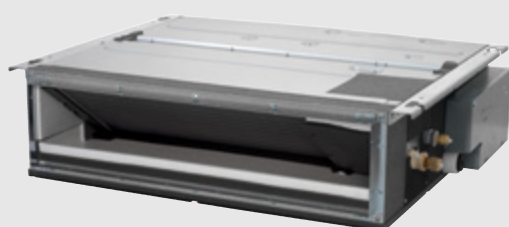
Attractive, wall mounted design with perfect indoor air quality.





Discreet comfort: FTXP-KV

Stylish front panel design blends with every interior including dry programme.



Concealed ceiling unit: FDXM-F

Only the suction and discharge grilles are visible.

Choose the right partner: pair and multi applications

Select the corresponding outdoor unit to best suit your needs. Pair applications connect one outdoor unit with one indoor unit. Space-saving multi units can connect up to five indoor units in multiple rooms.

Units for pair applications

- › RXZ-N (combined with Ururu Sarara)
- › RXJ-M (combined with Daikin Emura)
- › RXM-M (combined with FTXM-M)

Units for multi applications

- › 2MXM-M (combinable with FTXJ-M / FTXM-M, FDXM-F and FTXP-KV)
- › 3MXM-M (combinable with FTXJ-M / FTXM-M and FDXM-F)
- › 4MXM-M (combinable with FTXJ-M / FTXM-M and FDXM-F)
- › 5MXM-M (combinable with FTXJ-M / FTXM-M and FDXM-F)



Energy efficiency

Creating a fresh climate at home is about more than just pure comfort. Daikin systems are easy on your wallet and good for the environment, too. The next-generation refrigerant R-32 and optimised compressors make sure you stay in your comfort zone.



Seasonal efficiency in heating and cooling

Daikin's range of advanced energy-saving technologies provide high seasonal efficiencies in heating and cooling up to A+++, and our redesigned swing compressors are more efficient. Seasonal efficiency is a new way of rating heating and cooling products based on their energy efficiency over an entire year.

R-32: more efficient, better for the environment

Daikin uses R-32 refrigerant, a unit that emits fewer CO₂ emissions. That means they have lower global warming potential and are overall more efficient.

Experience perfect comfort

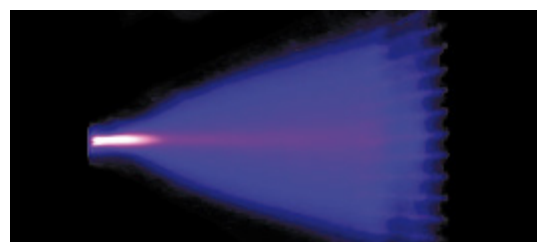
Superbly silent

Loud units are a thing of the past. Daikin systems are nearly inaudible. Enjoy year-round well-being without distracting noise.

Better air quality with the Daikin Flash Streamer

Daikin's Ururu Sarara and FTXM-M are all-in-one heating and cooling units that purify the air year round. Using electrons to trigger chemical reactions with air molecules, the Flash Streamer breaks down moulds, viruses or NO_x, leaving you with perfect, allergen-free air.

- › Ururu Sarara
- › FTXM-M



High-speed electrons generated by the Flash Streamer



Features at a glance

A better climate zone

Intelligent air distribution

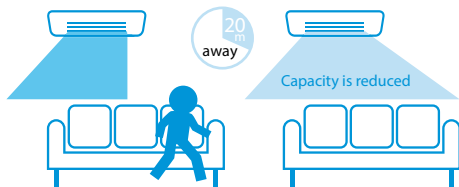
Air conditioners make rooms comfortable by moving fresh air around the room. Daikin's technology goes the extra mile so you don't feel the movement of air on your skin.

App control

Not home? With Daikin's online controller, no problem. Adjust a room's temperature, the flow rate or operation mode from your smartphone, anytime and anywhere. Additionally you can keep an eye on your energy consumption.

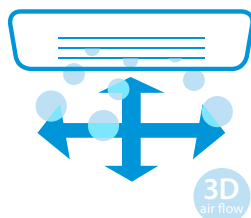
2-area intelligent eye

If you leave the room, your system switches into energy-saving mode. When you come back, it returns to the original setting, but blows the air away from you: no cold draughts.



3D air flow

The room's temperature stays constant by combining vertical and horizontal auto swing. Air is distributed evenly throughout the room and reaches the corners, even in larger spaces.



Ururu Sarara

Pure comfort

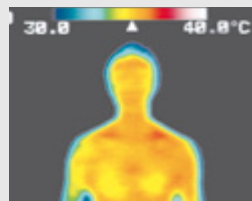
Ururu = humidification

Temperature cannot measure how a room feels.

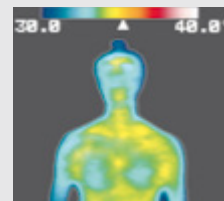
The air around us naturally contains a certain amount of moisture, known as humidity. During winter making the air too dry not only makes your room feel cooler (which might make you turn up the heating unnecessarily), it leads to sore throats and dry skin. It can even affect your furniture, wooden floors, books and art works.

The Ururu Sarara's intelligent humidification system draws in just the right amount of latent moisture from outside.

The thermograph shows the temperature distribution of the skin 30 min. after entry into the room



Temperature: 25°C
Humidity: 80%
You feel **warm** in humid air, even at a constant temperature



Temperature: 25°C
Humidity: 50%
You feel comparatively **cooler** in dehumidified air



FTXZ-N + RXZ-N

Ururu Sarara BLUEVOLUTION

Efficiency data	Seasonal efficiency (according to EN14825)							Indoor unit				Outdoor unit	Refrigerant	
	Cooling capacity	Heating capacity	Energy label	Pdesign	SEER	SCOP	Annual energy consumption	Dimensions	Sound pressure level (High/Nom./Low/Silent operation)		Sound power level	Sound power level	Type/ GWP	Charge (kg/ TCO ₂ Eq)
	Min./Nom./ Max. (kW)	Min./Nom./ Max. (kW)	Cooling/ Heating	Cooling/ Heating (kW)	Cooling	Heating	Cooling/ Heating (kWh)		Cooling (dBA)	Heating (dBA)	Cooling/ Heating (dBA)	Cooling/ Heating (dBA)		
25	0.6/2.5/ 3.9	0.6/3.6/ 7.5	A+++/ A+++	2.50/3.50	9.54	5.90	92/831	295x798x372	38/33/26/ 19	39/35/28/ 19	54/56	59/59	R-32/ 675	1.34/ 0.9
35	0.6/3.5/ 5.3	0.6/5.0/ 9.0		3.50/4.50	9.00	5.73	136/1,100		42/35/27/ 19	42/36/29/ 19	57/57	61/61		
50	0.6/5.0/ 5.8	0.6/6.3/ 9.4		5.00/5.60	8.60	5.50	203/1,427		47/38/30/ 23	44/38/31/ 24	60/59	63/64		

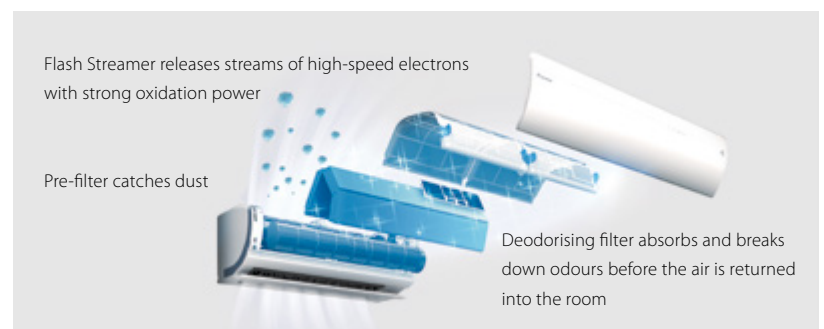
Contains fluorinated greenhouse gases



Ventilation and air purification

Fresh air, even with closed windows

Unlike a conventional air conditioner, the Ururu Sarara brings fresh, conditioned air into the room at the desired temperature without any thermal loss. The unit's self-cleaning filter collects dirt and particles from the air, which not only keeps your air clean but keeps the Ururu Sarara performing at top efficiency. Daikin's Flash Streamer technology makes sure that the air is automatically purified and odour-free.



Sarara = dehumidification

There is more than one way to cool a room in summer

During summer, ambient humidity rises – and just as dry air feels cooler, humid air feels warmer, making rooms feel hot and oppressive. With conventional systems, you would have no option but to bring down the temperature – wasting energy and electricity.

But the Ururu Sarara's intelligent dehumidification offers a more elegant solution. It automatically transfers the excess moisture out of the room – while always maintaining an even temperature – thus taking much less effort to make you feel comfortable.

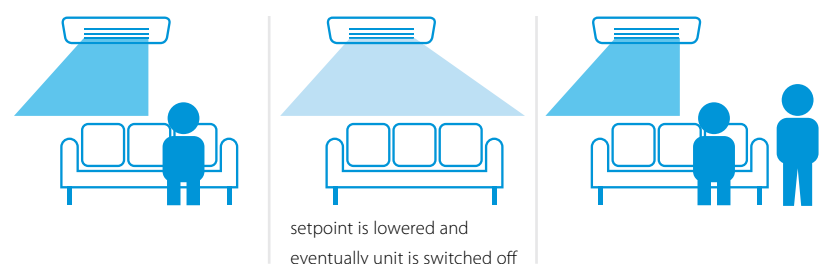
Optimal airflow pattern for your home

3-area intelligent eye

It goes without saying that a room only needs to be cooled or heated when you are actually in it. Nor do you want blasts of air over you or your guests while you are there. That is why Daikin developed an 'intelligent eye' for the Ururu Sarara.

It is a motion detector that not only knows when you are in the room (and turns the power down if you are not). It also knows where you are in the room, and directs the air flow away from you. Quite simply a smarter way to control a room's temperature without ruining its atmosphere.

How does the 3-area intelligent eye work?





Daikin Emura

Iconic comfort

Daikin Emura has style

Clean, minimal and sleek, Daikin Emura is designed in Europe for Europe and offers elegant and noteworthy climate control. But since its smart technology makes your home so comfortable, you'll almost forget it's there.

Why choose Daikin Emura?

- › Top design with two stylish finishes, silver and anthracite or pure matte white
- › High seasonal efficiencies up to A+++
- › Whisper quiet sound levels as low as 19 decibels.
- › Control via a smartphone app or a user friendly remote controller
- › 2-area intelligent eye
- › Inaudible to hear in silent mode
- › Indoor air quality thanks to titanium apatite photocatalytic filter and new silver allergen removal and air purifying filter

Outstanding design

Daikin Emura has been awarded the Reddot design award 2014, German Design Award – Special mention 2015, Focus Open 2014 Silver, Good Design Award 2014 and iF Design award 2015.



reddot award 2014
winner



German
Design Award
SPECIAL
MENTION 2015



Focus Open 2014
Silver



GOOD DESIGN
AWARD 2014





FTXJ-MW/S + RXJ-M



Efficiency data	Seasonal efficiency (according to EN14825)							Indoor unit			Outdoor unit	Refrigerant		
	Cooling capacity	Heating capacity	Energy label	Pdesign	SEER	SCOP	Annual energy consumption	Dimensions	Sound pressure level (High/Nom./Low/Silent operation)		Sound power level	Sound power level		
	Min./Nom./Max. (kW)	Min./Nom./Max. (kW)	Cooling/Heating	Cooling/Heating (kW)	Cooling	Heating	Cooling/Heating (kWh)	H x W x D (mm)	Cooling (dBA)	Heating (dBA)	Cooling/Heating (dBA)	Cooling/Heating (dBA)	Type/GWP	Charge (kg/TCO ₂ Eq)
20	1.30/2.30/2.80	1.30/2.50/4.30	A+++	2.30/2.10	8.73	4.61	92/638	303x998x212	38/32/25/19	40/34/28/19	54/56	61/62	R-32/675	0.9/0.6
25	0.90/2.40/3.30	0.90/3.20/4.70		2.40/2.70	8.64	4.60	97/822		41/34/28/19					
35	0.90/3.50/4.10	0.90/4.00/5.10	A++	3.50/3.00	7.19	4.60	170/913		45/34/26/20	45/37/29/20	59/59	63/63		
50	1.40/4.80/5.50	1.10/5.80/7.00		4.80/4.60	7.02	4.24	239/1,505		46/40/35/32	47/41/35/32	60/60			

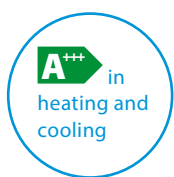
Contains fluorinated greenhouse gases

*Note: blue cells contain preliminary data



FTXM-M

Smart comfort



Energy efficiency up to A+++

Daikin's FTXM-M features up-to-date technology and built-in intelligence. This ensures that it always performs to the highest standards and an energy rating as high as A+++ in cooling and heating.

European design for European homes

Daikin FTXM-M is a sleek, unobtrusive air conditioning unit that matches European sensibilities regarding interior design. This split system wall mounted air conditioner meets European technical standards with impressive functionality.

Practically inaudible

It's easier to be yourself in a peaceful environment. Daikin FTXM-M runs so quietly, you'll almost forget it is there.



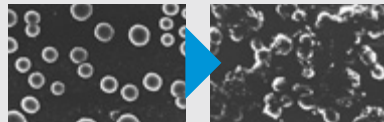
Fresher, cleaner air with controlled comfort

Daikin makes a room comfortable by cleaning the air and distributing it around the room – without disturbing you. The air cycles through the photocatalytic purification filter to break down odours. Then Daikin's Flash Streamer destroys any viruses or moulds before releasing pure and safe air into the room. 3D airflow circulates the air both vertically and horizontally. For added comfort, the 2-area intelligent eye directs air away from you when you're in the room and switches to energy saving mode when you're not.

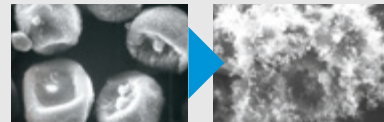
Flash Streamer technology



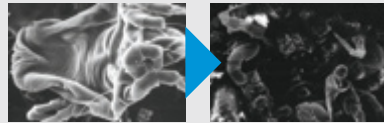
Virus
before and after irradiation



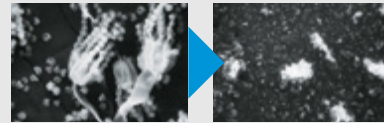
Pollen-based allergen
before and after irradiation



Fungal allergens
before and after irradiation



Allergens from animate beings
before and after irradiation



Viruses and allergens were placed on the electrode of the streamer discharge unit and then photographed through an electron microscope after being irradiated. (Testing organization: Yamagata University and Wakayama Medical University)



FTXM-M + RXM-M

BLUEEVOLUTION

Efficiency data	Seasonal efficiency (according to EN14825)							Indoor unit		Outdoor unit	Refrigerant	
	Cooling capacity	Heating capacity	Energy label	Pdesign	SEER	SCOP	Annual energy consumption	Dimensions	Sound power level	Sound power level		
	Min./Nom./Max. (kW)	Min./Nom./Max. (kW)	Cooling/Heating	Cooling/Heating (kW)	Cooling	Heating	Cooling/Heating (kWh)	H x W x D (mm)	Cooling/Heating (dBA)	Cooling/Heating (dBA)	Type/GWP	Charge (kg/TCO ₂ Eq)
20	1.3/2.0/2.6	1.3/2.5/3.5	A+++	2.00/2.30	8.53	5.10	83/632	272x811x294	57/-	60/-	R-32/ 675	1.2/0.8
25	1.3/2.5/3.2	1.3/2.8/4.7		2.50/2.40	8.52		103/659		57/-			1.4/1,0
35	1.4/3.5/4.0	1.4/4.0/5.2		3.40/2.50	8.51		140/686		60/-	61/-		1.3/0.9
42	1.7/4.2/5.0	1.7/5.4/6.0	A++	4.20/4.00	7.50	4.60	196/1,217	295x1,040x300	61/-	63/-		1.5/1.0
50	1.7/5.02/5.3	1.7/5.8/6.5		5.00/4.60	7.33		239/1,400		60/-			1.7/1.1
60	6.00	7.00		6.00/4.60	6.90	4.30	304/1,498		61/-			
71	7.10	8.20		6.80/6.20	6.11	3.81	390/2,278		62/-	66/-		

Contains fluorinated greenhouse gases

*Note: blue cells contain preliminary data



FTXP-KV



FDXM-F

Providing high efficiency and comfort

- › Discreet, stylish front panel blends easily with the wall, and matches any interior décor
- › Inaudible in silent mode
- › Online controller (optional): control your indoor from any location with an app, via your local network or internet
- › Dry programme allows humidity levels to be reduced without variations in room temperature



Compact concealed ceiling unit

- › Compact dimensions enable installation in narrow ceiling voids (with a height of only 200mm)
- › Discreetly concealed in the ceiling: only the grilles are visible
- › Low energy consumption
- › Dry programme allows humidity levels to be reduced without variations in room temperature



FTXP-KV

BLUEEVOLUTION

Efficiency data	Seasonal efficiency (according to EN14825)							Indoor unit				Outdoor unit	Refrigerant	
	Cooling capacity	Heating capacity	Energy label	Pdesign	SEER	SCOP	Annual energy consumption	Dimensions	Sound pressure level (High/Nom./Low/Silent operation)		Sound power level	Sound power level		
	Min./Nom./Max. (kW)	Min./Nom./Max. (kW)	Cooling/Heating	Cooling/Heating (kW)	Cooling	Heating	Cooling/Heating (kWh)	H x W x D (mm)	Cooling (dBA)	Heating (dBA)	Cooling/Heating (dBA)	Cooling/Heating (dBA)	Type/GWP	Charge (kg/TCO ₂ Eq)
25	Only available in multi model application							286x770x225	39/33/25/20	38/34/28/23	55/55	Only available in multi model application	R-32/675	-
35									40/33/26/20	40/34/28/23				
50									43/34/27/20	43/35/29/26	58/58			



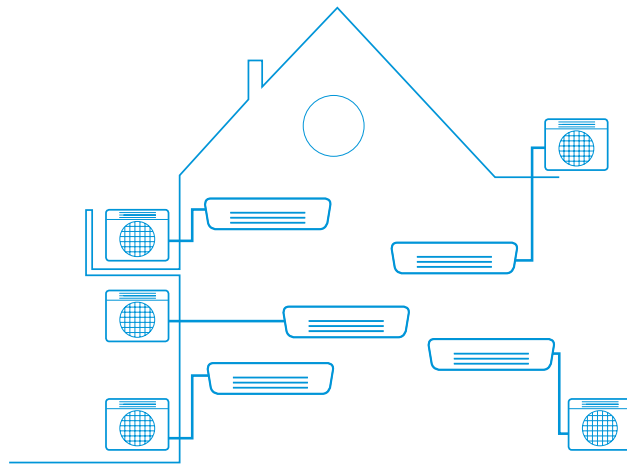
FDXM-F

BLUEEVOLUTION

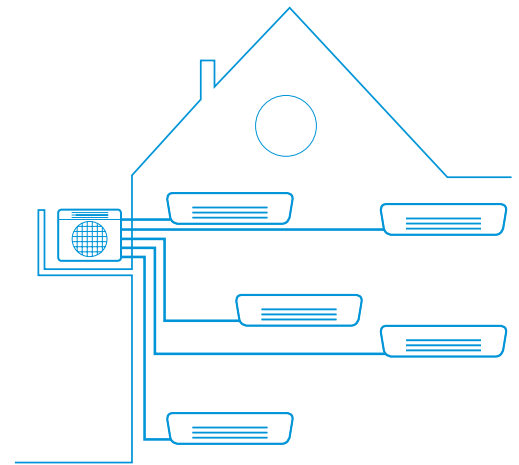
Efficiency data	Seasonal efficiency (according to EN14825)							Indoor unit			Outdoor unit	Refrigerant		
	Cooling capacity	Heating capacity	Energy label	Pdesign	SEER	SCOP	Annual energy consumption	Dimensions	Sound pressure level (High/Nom./Low/Silent operation)		Sound power level	Sound power level		
	Min./Nom./Max. (kW)	Min./Nom./Max. (kW)	Cooling/Heating	Cooling/Heating (kW)	Cooling	Heating	Cooling/Heating (kWh)	H x W x D (mm)	Cooling (dBA)	Heating (dBA)	Cooling/Heating (dBA)	Cooling/Heating (dBA)	Type/GWP	Charge (kg/TCO ₂ Eq)
25	Only available in multi model application							200x750x620	35/33/27	35/33/27	53/53	Only available in multi model application	R-32/675	-
35														
50								200x1,150x620	38/36/30	38/36/30	55/55			
60									38/35/30		56/56			

Contains fluorinated greenhouse gases

*Note: blue cells contain preliminary data



Pair application:
one outdoor unit per room



Multi application:
optimal solution when cooling or heating multiple rooms

Flexible installation – the elegant choice

Cooling with A+++ efficiency





Designed with energy-efficient compressors and refrigerants to provide optimum performance, most of our units can also cut their consumption by up to 80%.

Space saving multi outdoor units

Connect up to five indoor units with one multi outdoor unit. It is the optimal solutions for supplying all you need for cooling and heating multiple rooms.

Outdoor units and their connectable indoor units

BLUEEVOLUTION

	Outdoor unit	Refrigerant		Wall mounted																Concealed ceiling			
	Sound power level			Daikin Emura FTXJ-MW/S				CTXM-M	FTXM-M								FTXP-KV			FDXM-F			
																							
	Cooling/ Heating (dBA)	Type/ GWP	Charge (kg/ TCO ₂ Eq)	20	25	35	50	15	20	25	35	42	50	60	71	20	25	35	25	35	50	60	
2MXM40M	60	R-32/ 675	-	<div></div>	<div></div>	<div></div>		<div></div>	<div></div>	<div></div>	<div></div>					<div></div>	<div></div>	<div></div>	<div></div>	<div></div>			
2MXM50M	61			<div></div>	<div></div>	<div></div>	<div></div>	<div></div>	<div></div>	<div></div>	<div></div>	<div></div>	<div></div>	<div></div>			<div></div>	<div></div>	<div></div>	<div></div>	<div></div>	<div></div>	
3MXM40M	59			<div></div>	<div></div>	<div></div>		<div></div>	<div></div>	<div></div>								<div></div>	<div></div>	<div></div>			
3MXM52M	59			<div></div>	<div></div>	<div></div>	<div></div>	<div></div>	<div></div>	<div></div>	<div></div>	<div></div>	<div></div>						<div></div>	<div></div>	<div></div>		
3MXM68M	61			<div></div>	<div></div>	<div></div>	<div></div>	<div></div>	<div></div>	<div></div>	<div></div>	<div></div>	<div></div>	<div></div>	<div></div>			<div></div>	<div></div>	<div></div>	<div></div>	<div></div>	
4MXM68M	61			<div></div>	<div></div>	<div></div>	<div></div>	<div></div>	<div></div>	<div></div>	<div></div>	<div></div>	<div></div>	<div></div>	<div></div>	<div></div>			<div></div>	<div></div>	<div></div>	<div></div>	
4MXM80M	62			<div></div>	<div></div>	<div></div>	<div></div>	<div></div>	<div></div>	<div></div>	<div></div>	<div></div>	<div></div>	<div></div>	<div></div>	<div></div>			<div></div>	<div></div>	<div></div>	<div></div>	
5MXM90M	66			<div></div>	<div></div>	<div></div>	<div></div>	<div></div>	<div></div>	<div></div>	<div></div>	<div></div>	<div></div>	<div></div>	<div></div>	<div></div>			<div></div>	<div></div>	<div></div>	<div></div>	

*Note: blue cells contain preliminary data



Daikin Europe N.V. Naamloze Vennootschap Zandvoordestraat 300 · 8400 Oostende · Belgium · www.daikin.eu · BE 0412 120 336 · RPR Oostende (Responsible Editor)



Daikin Europe N.V. participates in the Eurovent Certification programme for Air conditioners (AC), Liquid Chilling Packages (LCP), Air handling units (AHU) and Fan coil units (FCU). Check ongoing validity of certificate online: www.eurovent-certification.com or using: www.certiflash.com

ECPEN16 - 004

0000 - 12/15



The present publication is drawn up by way of information only and does not constitute an offer binding upon Daikin Europe N.V. Daikin Europe N.V. has compiled the content of this publication to the best of its knowledge. No express or implied warranty is given for the completeness, accuracy, reliability or fitness for particular purpose of its content and the products and services presented therein. Specifications are subject to change without prior notice. Daikin Europe N.V. explicitly rejects any liability for any direct or indirect damage, in the broadest sense, arising from or related to the use and/or interpretation of this publication. All content is copyrighted by Daikin Europe N.V.

Printed on non-chlorinated paper.